



Gallorini
master of alloys

Products Catalogue

master alloys and soldering
powders for goldsmith and
silversmith

GALLORINI S.N.C

was born in Tuscany, Arezzo, known as the city of gold, which boasts a well-known past in the field of jewelry and processing of gold.

It was founded in 2007 by Stefano Gallorini, who thanks to its thirty-year experience in goldsmith managed to create a company, that today is known in all over the world, conveying his knowledge and his passion for this work to his sons Carlo and Luca, who today took the helm of the company.



PRODUCTION

We use medium frequency inductive machines, that prevent the risk of contamination by combustion products typical of gas furnaces ensuring homogeneity and purity of the final product. When necessary the alloys are protected with reductive flames and a thin layer of boric acid. The quality of the air in the laboratory is another important factor, the humidity is kept under 30% by our air-conditioning system.



THE ALLOYS

Our catalogue counts over 500 different kinds of recipes, including bronze, brass, alpaca, red yellow and white gold, silver applications alloys and soldering alloys for gold and silver. To prevent the risk of silicon contamination we separate the production of alloys with and without silicon. Crucibles and all other parts that come into contact with the molten metal are separated in silicon and siliconless.



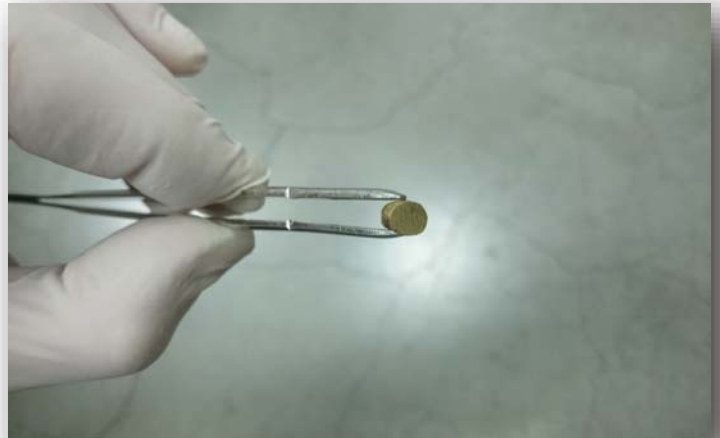
CONTROL OF RAW MATERIALS

All our production starts from elements of the highest quality. The raw materials come from trusted suppliers, who provide us **quality certificates**, furthermore a security check on **XRF machine** is made inside our factory for each incoming batch. Among our collaborators are the best equipped, well-known local producers and analytical laboratories, which provide us **ICP analysis** if necessary.



QUALITY CONTROL

All steps of the production cycle are carefully monitored. Every incoming order is divided in several loads of 50-60Kg each and since alloying the metals is the most important step, for every melt a random grain of alloy is analyzed by XRF in the core and stored, with a batch number, in our factory for at least two year.



PASSION, continuous research and studies

on elements thanks to the latest generation equipment at our disposal allow us to make constant updates and follow the latest news. We are always happy to offer consulting and technical support that distinguish us from our competitors. One of the most important goals of our company is to satisfy the demands of our clients, customizing alloys and powders, in order to create a perfect final product completely made in Italy.






CATALOGUE SHORT GUIDE

ALLOYS AND SOLDERS APPLICATION

MECHANICAL WORKS

- | | | |
|-----------------------|---|--|
| Plates |  | recommended for plates and sheets production, for stamped articles |
| Solid chains |  | recommended for wire and solid chain production |
| Hollow chains |  | recommended for hollow jewellery production especially for “aggraffato” chains |
| Soldered tubes |  | recommended for profiled soldered tubes made from plate |
| CNC & cut |  | recommended for CNC or tools cutting |
| Solder sheets |  | recommended for soldering sheets production |
| Solder wires |  | recommended for soldering wire production |

CASTING

- | | | |
|-----------------------|---|--|
| Open casting |  | recommended for casting with low/without protection from oxidation |
| Closed casting |  | recommended for closed casting systems |
| Wax setting |  | recommended for items with stones pre-placed in wax |

SOLDERING POWDERS

- | | | |
|----------|--------|---|
| Y | Yellow | Suitable for yellow gold articles soldering |
| R | Red | Suitable for red gold articles soldering |
| W | White | Suitable for white gold articles soldering |

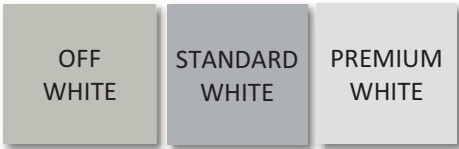
Soldering powder average granulometry: 20-25 µm

Soldering powder available granulometry: 9-15 µm (Superfine version)

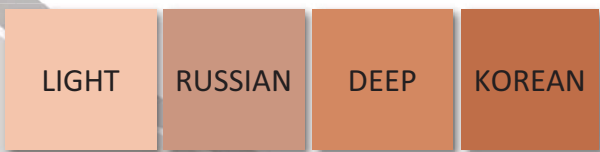
YELLOW GOLD COLOUR SHADES



WHITE GOLD COLOUR SHADES



RED GOLD COLOUR SHADES



SY 1014 DKM



9K GOLD • UNIVERSAL

light yellow shade - entry level

Silver %	Density, g/cm ³	Melting range, °C	Hardness, HV
4	11,00	880-925	95-/-

9K GOLD

Plates	Solid chains	Hollow chains	Soldered tubes	CNC & cut	Open casting	Closed casting	Wax setting
■ ■ ■ ■ □ □	■ ■ ■ ■ □ □	■ ■ ■ ■ □ □	■ ■ ■ ■ □ □	■ □ □ □ □	■ □ □ □ □	■ ■ □ □ □	■ ■ □ □ □

Suitable fineness and metal

Alloy code

Recommended application:
mechanical works/casting/
universal

Main parameters:
Silver percentage, density,
melting range temperature,
hardness before and after
hardening (if possible)

Metal colour

Metal colour shade
and main features

Alloy application suitability

Suitable fineness and metal

SSY 918 M



14K GOLD • SOLDER

MEDIUM SOFT - suitable for "aggraffato" wire

Silver %	Density, g/cm ³	Melting range, °C	Hardness, HV
38	11,00	880-925	95-/-

Solder sheets	Solder wires						
■ ■ ■ ■ ■	■ ■ ■ ■ □						

Solder alloy code

Suitable fineness and metal

Main parameters:
Silver percentage, density,
melting range temperature

14K GOLD SOLDER

Suitable fineness, metal and colour

Solder alloy application suitability

Solder hardness and main features

S103 EVO



SOLDERING POWDER

zinc-based soldering powder for gold - contains deoxidizers and reinforces the link

9K	10K	14K	18K	21/22K	AG	BRONZE	BRASS
W	W	YRW	YRW	□	□	□	□

Soldering powder code

Soldering powder main application

Soldering powder suitability for various metals,
colours, fineness

SY 271 A



21K GOLD • UNIVERSAL

light yellow shade - small grain size

Silver %	Density, g/cm ³	Melting range, °C	Hardness, HV
5	16,70	899-912	120-/-

Plates	Solid chains	Hollow chains	Soldered tubes	CNC & cut	Open casting	Closed casting	Wax setting
■ ■ ■ ■ ■	■ ■ ■ ■ ■	■ ■ ■ ■ ■	■ ■ ■ ■ ■	■ ■ ■ ■ ■	■ ■ ■ ■ ■	■ ■ ■ ■ ■	■ ■ ■ ■ ■

SY 21 GA



21K GOLD • UNIVERSAL

rich yellow shade - small grain size

Silver %	Density, g/cm ³	Melting range, °C	Hardness, HV
6	16,60	787-893	128-225

Plates	Solid chains	Hollow chains	Soldered tubes	CNC & cut	Open casting	Closed casting	Wax setting
■ ■ ■ ■ ■	■ ■ ■ ■ ■	■ ■ ■ ■ ■	■ ■ ■ ■ ■	■ ■ ■ ■ ■	■ ■ ■ ■ ■	■ ■ ■ ■ ■	■ ■ ■ ■ ■

SY 2022 G



21K GOLD • UNIVERSAL

rich yellow shade - small grain size

Silver %	Density, g/cm ³	Melting range, °C	Hardness, HV
9,5	16,60	900-930	120-/-

Plates	Solid chains	Hollow chains	Soldered tubes	CNC & cut	Open casting	Closed casting	Wax setting
■ ■ ■ ■ ■	■ ■ ■ ■ ■	■ ■ ■ ■ ■	■ ■ ■ ■ ■	■ ■ ■ ■ ■	■ ■ ■ ■ ■	■ ■ ■ ■ ■	■ ■ ■ ■ ■

SY 574 R



21K GOLD • UNIVERSAL

rich yellow shade - small grain size

Silver %	Density, g/cm ³	Melting range, °C	Hardness, HV
16	16,60	900-910	120-/-

Plates	Solid chains	Hollow chains	Soldered tubes	CNC & cut	Open casting	Closed casting	Wax setting
■ ■ ■ ■ ■	■ ■ ■ ■ ■	■ ■ ■ ■ ■	■ ■ ■ ■ ■	■ ■ ■ ■ ■	■ ■ ■ ■ ■	■ ■ ■ ■ ■	□ □ □ □ □

SY 2022 I



21K GOLD • UNIVERSAL

light yellow shade - small grain size

Silver %	Density, g/cm ³	Melting range, °C	Hardness, HV
32	16,70	940-955	110

Plates	Solid chains	Hollow chains	Soldered tubes	CNC & cut	Open casting	Closed casting	Wax setting
■ ■ ■ ■ ■	■ ■ ■ ■ ■	■ ■ ■ ■ ■	■ ■ ■ ■ ■	■ ■ ■ ■ ■	■ ■ ■ ■ ■	■ ■ ■ ■ ■	■ ■ ■ ■ ■

SY 572 R



21K GOLD • UNIVERSAL

rich yellow shade - small grain size

Silver %	Density, g/cm ³	Melting range, °C	Hardness, HV
36	16,60	900-910	115

Plates	Solid chains	Hollow chains	Soldered tubes	CNC & cut	Open casting	Closed casting	Wax setting
■ ■ ■ ■ ■	■ ■ ■ ■ ■	■ ■ ■ ■ ■	■ ■ ■ ■ ■	■ ■ ■ ■ ■	■ ■ ■ ■ ■	■ ■ ■ ■ ■	■ ■ ■ ■ ■

SY 22 HR



21K GOLD • MECHANICAL

rich yellow shade - small grain size

Silver %	Density, g/cm ³	Melting range, °C	Hardness, HV
9	16,50	905-925	115-/-

Plates	Solid chains	Hollow chains	Soldered tubes	CNC & cut	Open casting	Closed casting	Wax setting
■■■■■□	■■■■■□	■■■■■	■■■■■□	■■■■■□	□□□□□	□□□□□	□□□□□

SY 2022 C



21K GOLD • CASTING

rich yellow shade - small grain size -
deoxidizing action

Silver %	Density, g/cm ³	Melting range, °C	Hardness, HV
11	16,50	895-925	115-/-

Plates	Solid chains	Hollow chains	Soldered tubes	CNC & cut	Open casting	Closed casting	Wax setting
□□□□□	□□□□□	□□□□□	□□□□□	□□□□□	■■■■■□	■■■■■□	■■■■■□

SY 574 P



21K GOLD • CASTING

rich yellow shade - deoxidizing
action

Silver %	Density, g/cm ³	Melting range, °C	Hardness, HV
16	16,50	905-930	115-/-

Plates	Solid chains	Hollow chains	Soldered tubes	CNC & cut	Open casting	Closed casting	Wax setting
□□□□□	□□□□□	□□□□□	□□□□□	□□□□□	■■■■■□	■■■■■□	■■■■■□

SY 271 A



22K GOLD • UNIVERSAL

rich yellow shade - entry level

Silver %	Density, g/cm ³	Melting range, °C	Hardness, HV
5	17,40	926-948	90-/-

Plates	Solid chains	Hollow chains	Soldered tubes	CNC & cut	Open casting	Closed casting	Wax setting
■■■■■□	■■■■■	■■■■■□	■■■■■□	■■■■■□	■■■■■□	■■■■■□	■■■■■□

SY 21 GA



22K GOLD • UNIVERSAL

rich yellow shade - small grain size

Silver %	Density, g/cm ³	Melting range, °C	Hardness, HV
6	17,39	801-936	97-165

Plates	Solid chains	Hollow chains	Soldered tubes	CNC & cut	Open casting	Closed casting	Wax setting
■■■■■□	■■■■■	■■■■■	■■■■■	■■■■■□	■■■■■□	■■■■■□	■■■■■□

SY 2022 G



22K GOLD • UNIVERSAL

rich yellow shade - small grain size

Silver %	Density, g/cm ³	Melting range, °C	Hardness, HV
9,5	17,39	920-960	110-/-

Plates	Solid chains	Hollow chains	Soldered tubes	CNC & cut	Open casting	Closed casting	Wax setting
■■■■■□	■■■■■	■■■■■	■■■■■□	■■■■■□	■■■■■□	■■■■■□	■■■■■□

SY 574 R



22K GOLD • UNIVERSAL

rich yellow shade - small grain size

Silver %	Density, g/cm ³	Melting range, °C	Hardness, HV
16	17,40	930-950	95-/-

Plates	Solid chains	Hollow chains	Soldered tubes	CNC & cut	Open casting	Closed casting	Wax setting
■■■■■□	■■■■■□	■■■■□□	■■■■□□	■■■■□□	■■■■□□	■■■■□□	□□□□□

SY 2022 I



22K GOLD • UNIVERSAL

light yellow shade - small grain size

Silver %	Density, g/cm ³	Melting range, °C	Hardness, HV
32	17,30	940-960	95-/-

Plates	Solid chains	Hollow chains	Soldered tubes	CNC & cut	Open casting	Closed casting	Wax setting
■■■■■□	■■■■■□	■■■■■□	■■■■■□	■■■■□□	■■■■□□	■■■■□□	■■■■□□

SY 572 R



22K GOLD • UNIVERSAL

rich yellow shade - small grain size

Silver %	Density, g/cm ³	Melting range, °C	Hardness, HV
36	17,40	930-950	90-/-

Plates	Solid chains	Hollow chains	Soldered tubes	CNC & cut	Open casting	Closed casting	Wax setting
■■■■■□	■■■■■□	■■■■□□	■■■■□□	■■■■□□	■■■■□□	■■■■□□	■■■■□□

SY 22 HR



22K GOLD • MECHANICAL

rich yellow shade - small grain size

Silver %	Density, g/cm ³	Melting range, °C	Hardness, HV
9	17,30	915-955	105-/-

Plates	Solid chains	Hollow chains	Soldered tubes	CNC & cut	Open casting	Closed casting	Wax setting
■■■■■□	■■■■□□	■■■■■□	■■■■□□	■■■■□□	□□□□□	□□□□□	□□□□□

SY 2022 C



22K GOLD • CASTING

rich yellow shade - small grain size -
deoxidizing action

Silver %	Density, g/cm ³	Melting range, °C	Hardness, HV
11	17,80	910-950	80-/-

Plates	Solid chains	Hollow chains	Soldered tubes	CNC & cut	Open casting	Closed casting	Wax setting
□□□□□	□□□□□	□□□□□	□□□□□	□□□□□	■■■■■□	■■■■■□	■■■■■□

SY 574 P



22K GOLD • CASTING

rich yellow shade - deoxidizing
action

Silver %	Density, g/cm ³	Melting range, °C	Hardness, HV
16	17,30	930-960	90-/-

Plates	Solid chains	Hollow chains	Soldered tubes	CNC & cut	Open casting	Closed casting	Wax setting
□□□□□	□□□□□	□□□□□	□□□□□	□□□□□	■■■■■□	■■■■■□	■■■■■□



Gallorini
master of alloys



Via la Casella 2c
Capolona (Arezzo) Italy

ALLOYS • POWDERS • TECHNOLOGY

www.gallorini.it