



Products Catalogue

master alloys and soldering
powders for goldsmith and
silversmith

GALLORINI S.N.C

was born in Tuscany, Arezzo, known as the city of gold, which boasts a well-known past in the field of jewelry and processing of gold.

It was founded in 2007 by Stefano Gallorini, who thanks to its thirty-year experience in goldsmith managed to create a company, that today is known in all over the world, conveying his knowledge and his passion for this work to his sons Carlo and Luca, who today took the helm of the company.



PRODUCTION

We use medium frequency inductive machines, that prevent the risk of contamination by combustion products typical of gas furnaces ensuring homogeneity and purity of the final product. When necessary the alloys are protected with reductive flames and a thin layer of boric acid. The quality of the air in the laboratory is another important factor, the humidity is kept under 30% by our air-conditioning system.



THE ALLOYS

Our catalogue counts over 500 different kinds of recipes, including bronze, brass, alpaca, red yellow and white gold, silver applications alloys and soldering alloys for gold and silver. To prevent the risk of silicon contamination we separate the production of alloys with and without silicon. Crucibles and all other parts that come into contact with the molten metal are separated in silicon and siliconless.



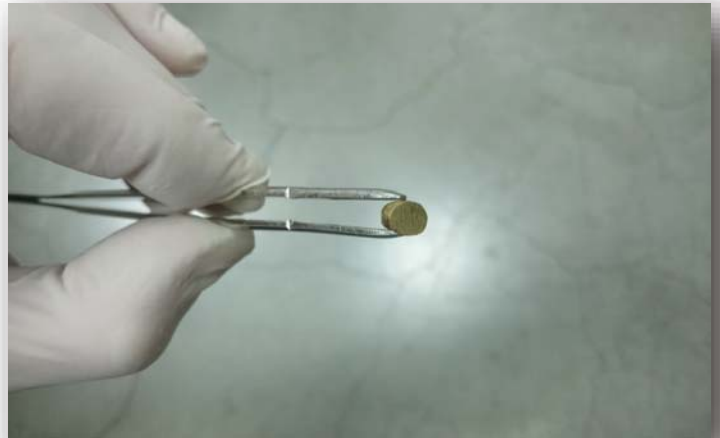
CONTROL OF RAW MATERIALS

All our production starts from elements of the highest quality. The raw materials come from trusted suppliers, who provide us **quality certificates**, furthermore a security check on **XRF machine** is made inside our factory for each incoming batch. Among our collaborators are the best equipped, well-known local producers and analytical laboratories, which provide us **ICP analysis** if necessary.



QUALITY CONTROL

All steps of the production cycle are carefully monitored. Every incoming order is divided in several loads of 50-60Kg each and since alloying the metals is the most important step, for every melt a random grain of alloy is analyzed by XRF in the core and stored, with a batch number, in our factory for at least two year.



PASSION, continuous research and studies

on elements thanks to the latest generation equipment at our disposal allow us to make constant updates and follow the latest news. We are always happy to offer consulting and technical support that distinguish us from our competitors. One of the most important goals of our company is to satisfy the demands of our clients, customizing alloys and powders, in order to create a perfect final product completely made in Italy.



CATALOGUE SHORT GUIDE

ALLOYS AND SOLDERS APPLICATION

MECHANICAL WORKS

Plates



recommended for plates and sheets production, for stamped articles

Solid chains



recommended for wire and solid chain production

Hollow chains



recommended for hollow jewellery production especially for “aggraffato” chains

Soldered tubes



recommended for profiled soldered tubes made from plate

CNC & cut



recommended for CNC or tools cutting

Solder sheets



recommended for soldering sheets production

Solder wires



recommended for soldering wire production

CASTING

Open casting



recommended for casting with low/without protection from oxidation

Closed casting



recommended for closed casting systems

Wax setting



recommended for items with stones pre-placed in wax

SOLDERING POWDERS

Y Yellow Suitable for yellow gold articles soldering

R Red Suitable for red gold articles soldering

W White Suitable for white gold articles soldering

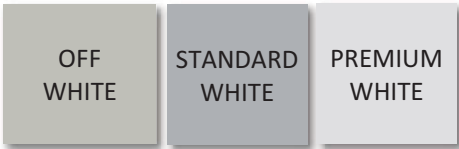
Soldering powder average granulometry: 20-25 µm

Soldering powder available granulometry: 9-15 µm (Superfine version)

YELLOW GOLD COLOUR SHADES



WHITE GOLD COLOUR SHADES



RED GOLD COLOUR SHADES



SY 1014 DKM



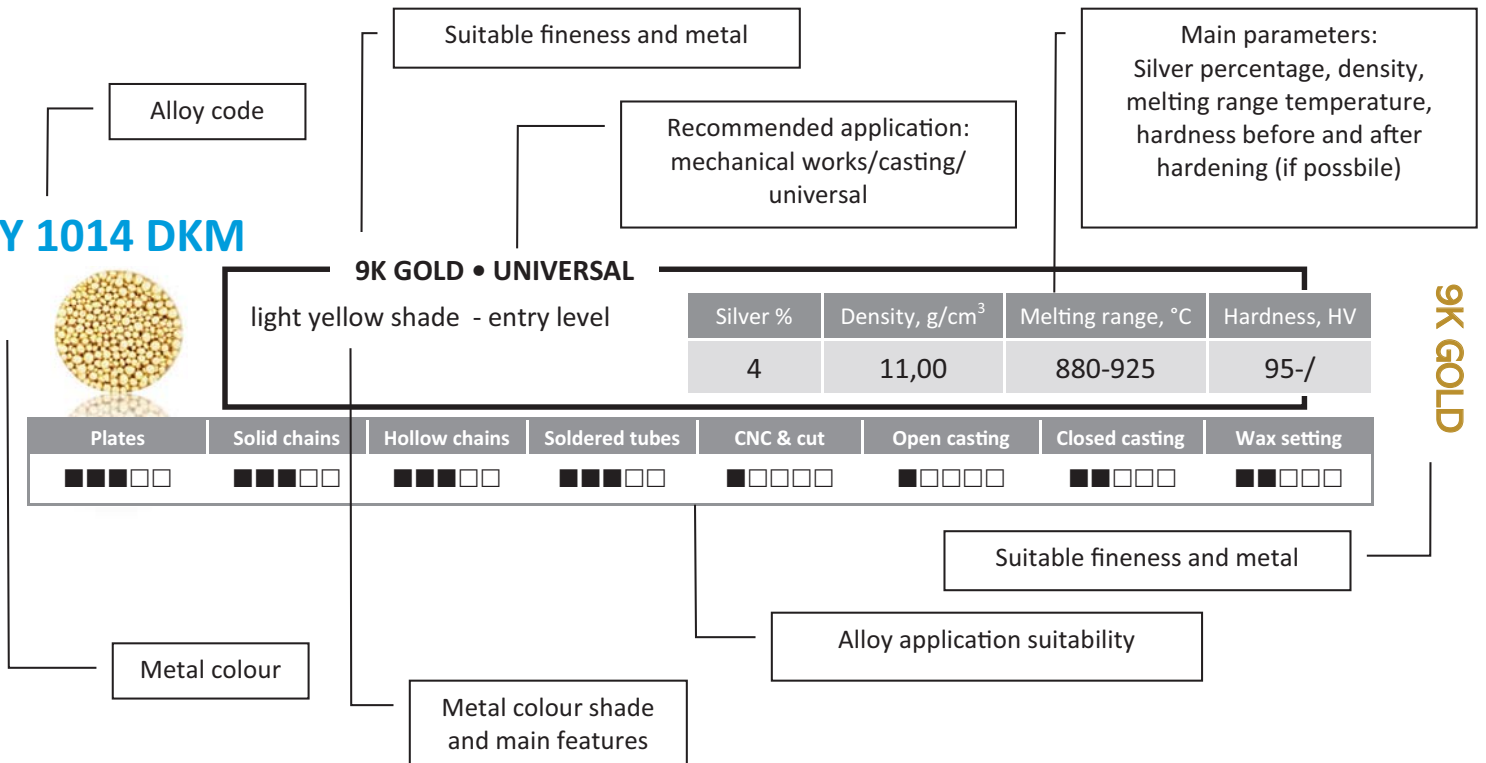
9K GOLD • UNIVERSAL

light yellow shade - entry level

Silver %	Density, g/cm ³	Melting range, °C	Hardness, HV
4	11,00	880-925	95-/-

Plates	Solid chains	Hollow chains	Soldered tubes	CNC & cut	Open casting	Closed casting	Wax setting
■ ■ ■ ■ □ □	■ ■ ■ ■ □ □	■ ■ ■ ■ □ □	■ ■ ■ ■ □ □	■ □ □ □ □ □	■ □ □ □ □ □	■ ■ □ □ □ □	■ ■ □ □ □ □

9K GOLD



SSY 918 M



Solder alloy code

Suitable fineness and metal

Main parameters:
Silver percentage, density,
melting range temperature

14K GOLD • SOLDER

MEDIUM SOFT - suitable for
"aggraffato" wire

Silver %	Density, g/cm ³	Melting range, °C	Hardness, HV
38	11,00	880-925	95-/-

14K GOLD SOLDER

Solder sheets	Solder wires						
■ ■ ■ ■ ■	■ ■ ■ ■ □						

Suitable fineness, metal and colour

Solder alloy application suitability

Solder hardness and main features

S103 EVO



Soldering powder code

Soldering powder main application

SOLDERING POWDER

zinc-based soldering powder for gold - contains deoxidizers and reinforces the link

9K	10K	14K	18K	21/22K	AG	BRONZE	BRASS
W	W	YRW	YRW	□	□	□	□

Soldering powder suitability for various metals,
colours, fineness

SW 453 P**14K GOLD • CASTING**Ni 20% - premium white -
deoxidizing action

Silver %	Density, g/cm ³	Melting range, °C	Hardness, HV
2	12,8	915-940	155

Plates	Solid chains	Hollow chains	Soldered tubes	CNC & cut	Open casting	Closed casting	Wax setting
□□□□□	□□□□□	□□□□□	□□□□□	□□□□□	■□□□□	■□□□□	■□□□□

WLG SC**14K GOLD • CASTING**Ni 20% - standard white -
deoxidizing action

Silver %	Density, g/cm ³	Melting range, °C	Hardness, HV
5	12,7	900-940	140

Plates	Solid chains	Hollow chains	Soldered tubes	CNC & cut	Open casting	Closed casting	Wax setting
□□□□□	□□□□□	□□□□□	□□□□□	□□□□□	■□□□□	■□□□□	■□□□□

WLG S**14K GOLD • CASTING**Ni 20,8% - premium white - small
grain size - deoxidizing action

Silver %	Density, g/cm ³	Melting range, °C	Hardness, HV
2,5	12,8	915-940	155

Plates	Solid chains	Hollow chains	Soldered tubes	CNC & cut	Open casting	Closed casting	Wax setting
□□□□□	□□□□□	□□□□□	□□□□□	□□□□□	■□□□□	■□□□□	■□□□□

WTB 255 C**14K GOLD • CASTING**Ni 25,5% - premium white - small
grain size - deoxidizing action

Silver %	Density, g/cm ³	Melting range, °C	Hardness, HV
2,5	14,65	897-919	180

Plates	Solid chains	Hollow chains	Soldered tubes	CNC & cut	Open casting	Closed casting	Wax setting
■□□□□	■□□□□	■□□□□	■□□□□	■□□□□	■□□□□	■□□□□	■□□□□

SW 18 MC**18 GOLD • UNIVERSAL**

Ni 15% - off white - small grain size

Silver %	Density, g/cm ³	Melting range, °C	Hardness, HV
85	14,7	895-920	180/220

Plates	Solid chains	Hollow chains	Soldered tubes	CNC & cut	Open casting	Closed casting	Wax setting
■□□□□	■□□□□	■□□□□	■□□□□	■□□□□	■□□□□	■□□□□	■□□□□

SW 186**18 GOLD • UNIVERSAL**Ni 20% - standard white - small
grain size

Silver %	Density, g/cm ³	Melting range, °C	Hardness, HV
0	14,66	908-932	180/200

Plates	Solid chains	Hollow chains	Soldered tubes	CNC & cut	Open casting	Closed casting	Wax setting
■□□□□	■□□□□	■□□□□	■□□□□	■□□□□	■□□□□	■□□□□	■□□□□

SW 052 S



18 GOLD • UNIVERSAL

Ni 20% - standard white - small grain size - deoxidizing action

Silver %	Density, g/cm ³	Melting range, °C	Hardness, HV
2	14,7	882-927	185/192

Plates	Solid chains	Hollow chains	Soldered tubes	CNC & cut	Open casting	Closed casting	Wax setting
■■■■■	■■■■■	■■■■■	■■■■■	■■■■■	■■■■■	■■■■■	■■■■■

SW 053 R



18 GOLD • UNIVERSAL

Ni 30% - standard white - small grain size

Silver %	Density, g/cm ³	Melting range, °C	Hardness, HV
0	14,66	908-937	210

Plates	Solid chains	Hollow chains	Soldered tubes	CNC & cut	Open casting	Closed casting	Wax setting
■□□□	■□□□	■□□□	■□□□	■■■■■	■■■■■	■■■■■	■■■□□

SW 451 R



18K GOLD • MECHANICAL

Ni 15% - off white - small grain size

Silver %	Density, g/cm ³	Melting range, °C	Hardness, HV
0	14,66	897-916	196

Plates	Solid chains	Hollow chains	Soldered tubes	CNC & cut	Open casting	Closed casting	Wax setting
■■■■■	■■■■■	■■■■■	■■■■■	■■■■■	□□□□	□□□□	□□□□

SW 18 H



18K GOLD • MECHANICAL

Ni 20% - off white - small grain size

Silver %	Density, g/cm ³	Melting range, °C	Hardness, HV
0	14,67	905-930	230

Plates	Solid chains	Hollow chains	Soldered tubes	CNC & cut	Open casting	Closed casting	Wax setting
■■■■■	■■■■■	■■■■■	■■■■■	■■■■■	□□□□	□□□□	□□□□

SW 452 R



18K GOLD • MECHANICAL

Ni 20% - off white - small grain size

Silver %	Density, g/cm ³	Melting range, °C	Hardness, HV
0	14,67	903-927	193

Plates	Solid chains	Hollow chains	Soldered tubes	CNC & cut	Open casting	Closed casting	Wax setting
■■■■■	■■■■■	■■■■■	■■■■■	■■■■■	□□□□	□□□□	□□□□

SW 210



18K GOLD • MECHANICAL

Ni 21% - standard white - small grain size

Silver %	Density, g/cm ³	Melting range, °C	Hardness, HV
0	14,7	915-935	220

Plates	Solid chains	Hollow chains	Soldered tubes	CNC & cut	Open casting	Closed casting	Wax setting
■■■■■	■■■■■	■■■□□	■■■□□	■■■□□	□□□□	□□□□	□□□□

SW 14 BZ**18K GOLD • CASTING**

Ni 20% - standard white - small grain size -deoxidizing action

Silver %	Density, g/cm ³	Melting range, °C	Hardness, HV
6,5	14,7	875-900	200

Plates	Solid chains	Hollow chains	Soldered tubes	CNC & cut	Open casting	Closed casting	Wax setting
□□□□□	□□□□□	□□□□□	□□□□□	□□□□□	■ ■ □ □ □	■ ■ ■ ■ □	■ ■ ■ ■ □

SW 18 C3**18 GOLD • CASTING**

Ni 20% - standard white - small grain size -deoxidizing action

Silver %	Density, g/cm ³	Melting range, °C	Hardness, HV
0	14,8	885-910	180

Plates	Solid chains	Hollow chains	Soldered tubes	CNC & cut	Open casting	Closed casting	Wax setting
□□□□□	□□□□□	□□□□□	□□□□□	□□□□□	■ ■ □ □ □	■ ■ ■ □ □	■ ■ ■ □ □

SW 14 EWC**18K GOLD • CASTING**

Ni 20% - standard white - small grain size -deoxidizing action - shining surface

Silver %	Density, g/cm ³	Melting range, °C	Hardness, HV
2	14,9	885-910	195

Plates	Solid chains	Hollow chains	Soldered tubes	CNC & cut	Open casting	Closed casting	Wax setting
□□□□□	□□□□□	□□□□□	□□□□□	□□□□□	■ ■ ■ ■ ■	■ ■ ■ □ □	■ ■ ■ □ □

SW 453 P**18K GOLD • CASTING**

Ni 20% - standard white - deoxidizing action

Silver %	Density, g/cm ³	Melting range, °C	Hardness, HV
2	14,9	885-910	195

Plates	Solid chains	Hollow chains	Soldered tubes	CNC & cut	Open casting	Closed casting	Wax setting
□□□□□	□□□□□	□□□□□	□□□□□	□□□□□	■ ■ □ □ □	■ ■ ■ ■ ■	■ ■ ■ □ □

WLG SC**18K GOLD • CASTING**

Ni 20% - off white - deoxidizing action

Silver %	Density, g/cm ³	Melting range, °C	Hardness, HV
5	14,7	885-915	190

Plates	Solid chains	Hollow chains	Soldered tubes	CNC & cut	Open casting	Closed casting	Wax setting
□□□□□	□□□□□	□□□□□	□□□□□	□□□□□	■ ■ □ □ □	■ ■ ■ ■ ■	■ ■ ■ □ □

SW 18 C**18K GOLD • CASTING**

Ni 20,4% - standard white - deoxidizing action

Silver %	Density, g/cm ³	Melting range, °C	Hardness, HV
0	14,8	885-910	180

Plates	Solid chains	Hollow chains	Soldered tubes	CNC & cut	Open casting	Closed casting	Wax setting
□□□□□	□□□□□	□□□□□	□□□□□	□□□□□	■ ■ □ □ □	■ ■ ■ □ □	■ ■ ■ □ □

WLG S



148 GOLD • CASTING

Ni 20,8% - standard white - small grain size -deoxidizing action

Silver %	Density, g/cm ³	Melting range, °C	Hardness, HV
2,5	14,9	885-910	195

Plates	Solid chains	Hollow chains	Soldered tubes	CNC & cut	Open casting	Closed casting	Wax setting
□□□□□	□□□□□	□□□□□	□□□□□	□□□□□	■ ■ ■ ■ ■	■ ■ ■ ■ □	■ ■ ■ ■ □

WTB 255 C



18K GOLD • CASTING

Ni 25,5% - standard white - small grain size -deoxidizing action

Silver %	Density, g/cm ³	Melting range, °C	Hardness, HV
2,3	14,6	900-925	185

Plates	Solid chains	Hollow chains	Soldered tubes	CNC & cut	Open casting	Closed casting	Wax setting
□□□□□	□□□□□	□□□□□	□□□□□	□□□□□	■ ■ □ □ □	■ ■ ■ ■ ■	■ ■ ■ ■ □

WD 28 C



18K GOLD • CASTING

Ni 28% - standard white - small grain size -deoxidizing action

Silver %	Density, g/cm ³	Melting range, °C	Hardness, HV
0	14,6	895-935	200

Plates	Solid chains	Hollow chains	Soldered tubes	CNC & cut	Open casting	Closed casting	Wax setting
□□□□□	□□□□□	□□□□□	□□□□□	□□□□□	■ ■ ■ ■ □	■ ■ ■ ■ □	■ □ □ □ □

SW 058 P



18K GOLD • CASTING

Ni 28% - standard white - small grain size -deoxidizing action

Silver %	Density, g/cm ³	Melting range, °C	Hardness, HV
0	14,65	911-937	210

Plates	Solid chains	Hollow chains	Soldered tubes	CNC & cut	Open casting	Closed casting	Wax setting
□□□□□	□□□□□	□□□□□	□□□□□	□□□□□	■ ■ ■ ■ □	■ ■ ■ ■ □	■ □ □ □ □



Gallorini
master of alloys



Via la Casella 2c
Capolona (Arezzo) Italy

ALLOYS • POWDERS • TECHNOLOGY

www.gallorini.it